

Ora et Labora

*Your support in action at
Ampleforth Abbey*



AMPLEFORTH
ABBEY



AMPLEFORTH
ABBEY



2020 & 2021 at Ampleforth Abbey

49 members

of the monastic community

3 monks

in Zimbabwe

8 monks

working in Parishes

9 chaplains

to Ampleforth College

7 chaplains

to the Lourdes Pilgrimage

60 online videos

of Home Retreat talks in 2020 & 2021

400 people

tuning in to Divine Office each week via audio stream

2000 views

of Ampleforth Abbey videos & live stream per week on average

7000 views

of Mass of the Lord's Supper 2020

We are grateful for the generosity that has been displayed over recent years by our friends.

Your donations in support of the life and works of the Community have had a tremendous impact. I hope you enjoy reading about the works that your support enables here and that this provides some insight into our life of prayer and our invitation to others to experience something of this. Please know that our friends and benefactors are held in prayer every day.

Over the last few years your support has enabled us to complete urgent repair and restoration works to the Abbey Church, make improvements to our live streaming, support the work of our brethren in Zimbabwe and their education fund. Generous legacies have helped us buy a much-needed new car for the monastery, supported our work in our parishes and provided for the ongoing needs of the community.

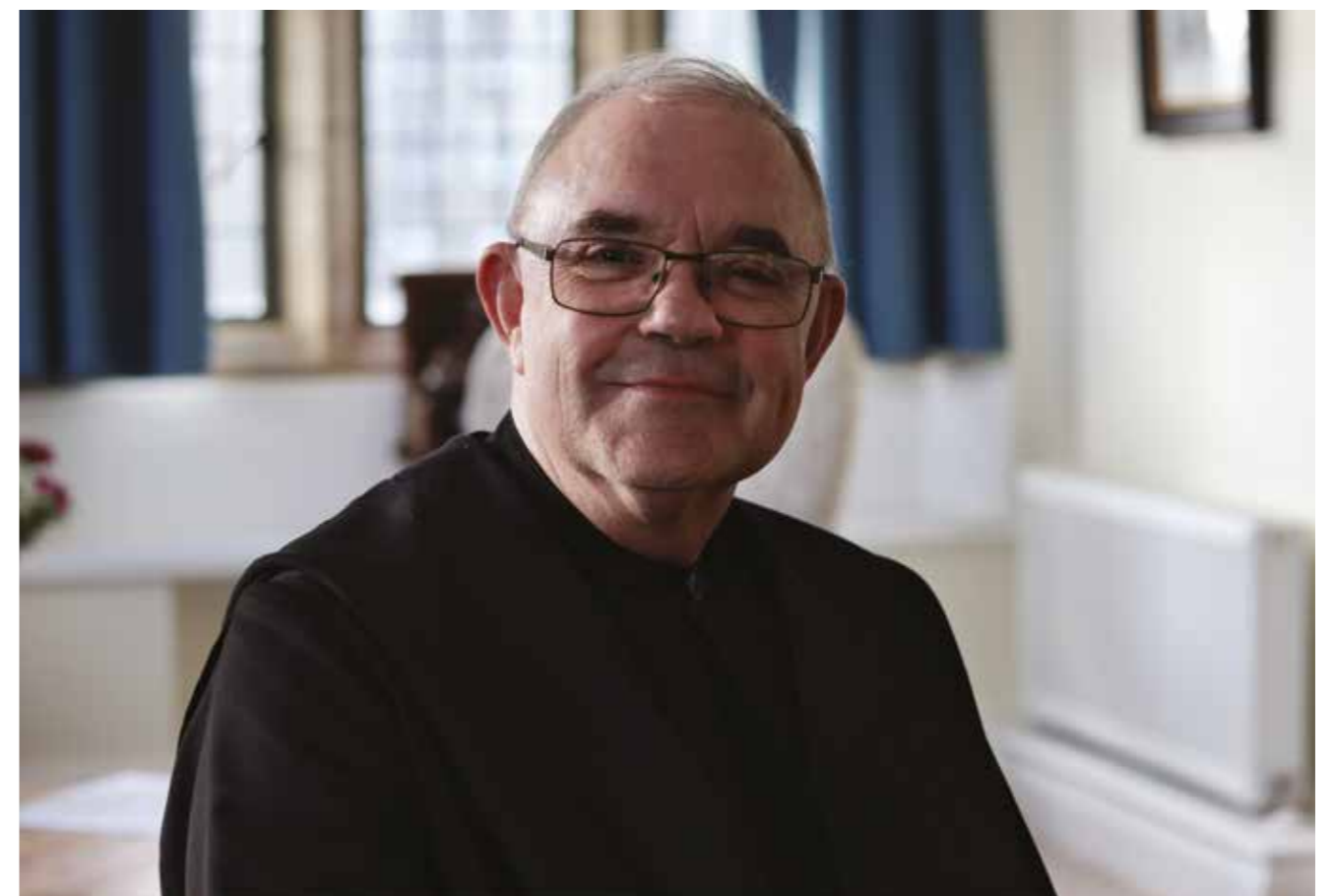
Where possible, our doors have been open to guests, school groups, retreatants, young people, groups from parishes and our first monastic interns. Through your

support we can welcome those who cannot afford to contribute fully to their stay with us. Thanks to support, our hospitality and retreat accommodation has had a new lease of life, our Visitor Centre is being renewed and Monks Bridge restored. This is an exciting time as we look to the future, with your support.

We are grateful for every donation that is made to the Ampleforth Abbey Trust, your support and friendship enriches so many areas of our life, prayer and work. We hope to see many of you here at Ampleforth in the year to come.

Thank you.

ABBOT ROBERT IGO OSB



A Roof over our Heads

Thank you to all those who supported our urgent appeal over the last 18 months to make significant repairs to the Abbey Church. The Community are very grateful to the generosity shown by many friends who helped us, in addition to the Catholic Trust for England and Wales and Historic England who provided us with a grant for the works from the Government's Culture Recovery Fund.

In early 2020 it became clear that the Abbey Church building was under threat. There was significant and troubling water damage to the South Transept, as well as other areas of the Church, and if this was not rectified, we would have reached a point where the cost of repair would have made it irreversible.

The Abbey Church is the centre of life at Ampleforth, a beacon in the valley, where the community gathers throughout the day to pray the Divine Office and for Mass, serving as the spiritual home for all who come here. The Abbey has immense value to so many people and this love for Ampleforth shone through in the support we received.

We are very grateful to Historic England and the Culture Recovery Fund for providing such a generous grant to cover a large majority of the costs. However, with the effects of COVID-19 on the Abbey Trust, it was clear that the project could not have been completed without further support.

The community has been overwhelmed by the generosity shown by so many friends to help us complete this important restoration. Just as the building of the Abbey Church was helped by donations all those years ago, its future was re-secured through many people giving generously. Often this



was in thanks for the live streaming of Mass and the Office during lockdown, where the monks could invite you into their home even when it was impossible to do so in person.

We look forward to welcoming many of you back into this Abbey Church in person, as well as online, in the knowledge that your support has played a significant role in making this possible.

EMMA CRAIG
DEVELOPMENT OFFICE



Hospitality Welcoming guests at the Abbey and reaching them in their homes

This has certainly been an unusual time for Hospitality at Ampleforth. Lockdowns, the forced closure of our accommodation and limitations on numbers of people gathering meant we were unable to welcome guests as we usually would, and our organised retreat programme had to go on hold for a lot of the time. In response to lockdown, the community developed an online hospitality ministry so that our pastoral presence could continue; the title "Together in Prayer" was given to this initiative. Little could we have envisaged the numbers of people we have been able to reach in this new way.

For two years running we found ourselves unable to host a physical Easter Retreat, which has always been a high point of the year. Instead, we offered an online programme, streaming Retreat talks in addition to the Liturgies and Ceremonies, even including the Stations of the Cross from Monks Wood. For some ceremonies, the numbers joining us online live or on catch up reached up to 7,000, ten times the number of people we could hope to host in our Abbey Church.

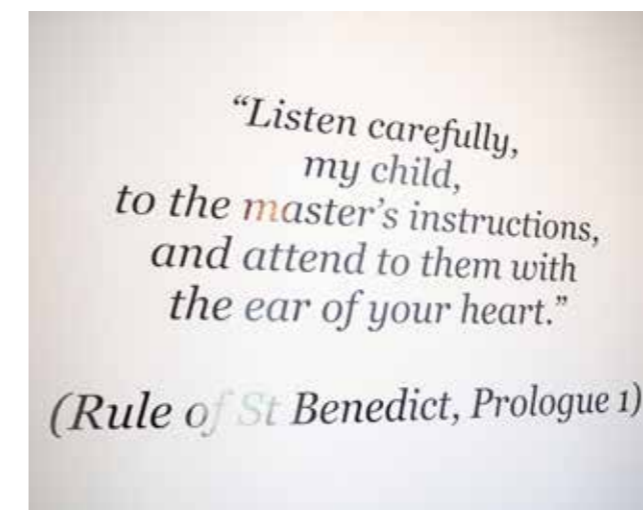
Over the year we developed a more regular programme, initially to replace our physical retreats, but the success of this online ministry means that many of the initiatives begun in lockdown now continue. Short Home Prayers are audio streamed from the Abbey nearly every day, Daily Mass is live streamed on YouTube, and we have also been offering a weekly Home Retreat. Every Saturday morning a member of the community provides a short reflection on a theme and offers those watching materials and things to consider during the day, all are encouraged to join the live stream of Compline in the evening. These reach hundreds of people every week.



Through our online ministry many have discovered Ampleforth Abbey for the first time or reconnected with the community after many years away. As we opened our accommodation again for private and then organised retreats it has been wonderful to welcome new, as well as familiar faces. We have also been delighted to see young people with us once again, with nearly 500 members of Youth 2000 coming to Ampleforth in August for the Bank Holiday weekend.

Much of our online ministry has been improved thanks to your support and encouragement. We have been lucky to experience the generosity of many in response to this, with many of you offering donations to support our work having joined us online, including our friends from the Ampleforth Lourdes Pilgrimage who have made donations to support our live streaming capabilities. We look forward to seeing where this takes us and hope to welcome more people here at Ampleforth as well as online in future.

FR KEVIN HAYDEN OSB
DEAN OF HOSPITALITY



WHAT LIVE STREAMING MEANT TO YOU IN LOCKDOWN

“You have been a great support with your live streaming masses and home retreats. A rock during this very difficult time of shifting sands. Thank you.”

“The constant support for all of us by the live streaming of Offices and Mass is such a blessing. Thank you.”

“Thank you so much for giving us the opportunity to watch Sunday Mass each week. I love listening to the sermons in particular and it’s such a comfort to hear the monks chant as they have always done.”

“Thank you for keeping a roof over the heads of the faithful. Your live stream is getting me through the pandemic, as I grieve for the loss of my wife. You are my support in the wilderness. Deo Gratias”

“Thank you for the live streaming and Home retreats. Very helpful during the lockdown and I love being able to sing along at Sunday Mass with the sheets provided.”

“It’s a joy to be able to join with you each day at Mass and in online prayer and Home Retreats.”

“Despite troubling times, it’s really good that we can still be with you, albeit virtually.”



Live streaming of Stations of the Cross from Monks Wood, 2021

Together in Prayer Live-Streaming from the Abbey

St Benedict tells his monks that the ‘work of God’ is something to which nothing else should be preferred; in other words, it is the most important part of the life of a monastery. As such, it is also the most important thing that we, as monks, have to share with our guests and visitors. St Benedict also tells us that monasteries are never without guests; unfortunately, this extract from the Rule does not seem to take into account the possibility of Covid lockdowns! Whilst it was largely possible for our monastic family life to continue as normal within the household of the monastery (thanks be to God), the absence of guests in our retreat houses, and guests and visitors from the Choir of the Abbey Church was immediately noticeable – and somewhat distressing. Faced with the challenge of guests not being able to share in our prayer at Ampleforth, we have sought to find ways in which our prayer could be brought to people wherever they are.

Happily, some years ago the community decided to broadcast the audio of all of the Offices (as picked up by the PA system) to an internet feed. We recently updated this to the Mixlr internet radio service, which seems to be more reliable – power cuts and the like notwithstanding! This has helped many people to remain connected with the prayer of the Community in the Divine Office, and it has been an enormous encouragement to the monks to know that so many – Oblates, friends, many people who have hitherto had no face-to-face connection with Ampleforth – have been able to pray the Office with us.

At the time of the first national lockdown, many of our friends asked us to try to find a way to make live video of the Mass available to an internet audience. After much



scrambling around to find suitable equipment, daily broadcasting of the Conventual Mass on YouTube began in April 2020. This has generally been well supported. Bishop Hugh Gilbert OSB once wrote that the main job of a monastic community is to celebrate the Paschal Triduum well; in this connection, it was a particular joy to us that so many joined us for the Easter ceremonies. Thanks to some generous donations, we are now investigating the more effective way to have a more permanent installation for video broadcasts in the Abbey Church.

Whilst we are very relieved to have been able to welcome guests and visitors back to the Abbey, we are now reflecting carefully on the question of which elements of our newfound online ministry could fruitfully be continued, now that we are (gradually) emerging from lockdown.

FR CEDD MANNION OSB

THE LIVE STREAM CAN BE ACCESSED VIA THE ABBEY WEBSITE, THE AMPLEFORTH ABBEY LITURGY YOUTUBE PAGE AND OUR AUDIO STREAM ON MIXLR

Looking to the Future

The Ampleforth Retreat Centre

The past few years have been a season of great change for the Ampleforth Abbey community. As we move out of COVID restrictions, our doors are reopening, and thanks to a generously given donation, a new chapter has begun at Ampleforth.

It has long been our shared vision to be a real spiritual home, to offer hospitality to all those who come seeking nourishment. That vision, which lies at the core of who we are as a monastic community, has led us to expand and develop our hospitality ministry and to establish a refurbished Retreat Centre at Ampleforth, one that provides our guests with a haven in which to experience the love of God, and to leave refreshed, recharged and transformed. Thanks to the incredible gift of this donation, we can bring this vision to life and have taken the first steps to shaping the renewed Ampleforth Retreat Centre.

Our vision for the Ampleforth Retreat Centre is to open that spiritual resource to a wider population of Christians and to all those seeking meaning in their life. It is our mission to support them in their discernment on life's journey and in their search for God's love; to be a place where in safety they can find support, encouragement and guidance. We aim to be welcoming to all, especially those who are underprivileged or excluded.

We are working to make big changes to our retreat buildings. Thanks to feedback gathered from our valued guests, we have a strong understanding of what's important and what



will make your stay with us as comfortable as possible: you'll find new bedrooms with en suites, fresh communal areas, and peaceful spaces for reflection.

Behind-the-scenes we'll also be exploring how we can use these new spaces in the best way. As we open our doors, we'll also be expanding our fantastic Pastoral team to join Katherine and Yvonne in the office. Together, and with the Community, they will be working on opening up what we offer and making sure the opportunity to come to Ampleforth is available to all.

FR KEVIN HAYDEN OSB
DEAN OF HOSPITALITY

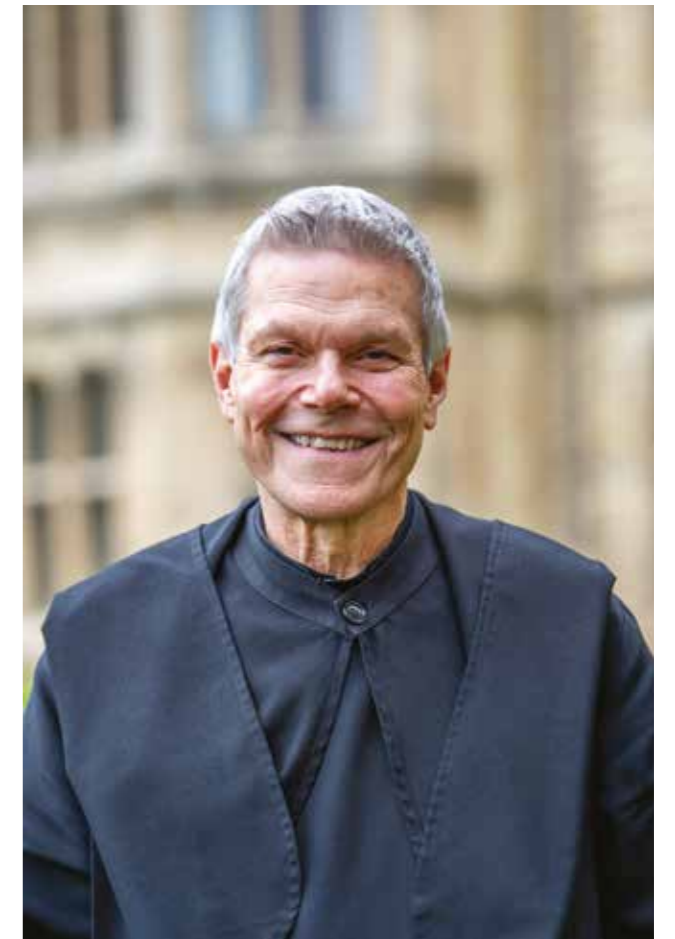
TO FIND OUT MORE ABOUT RETREATS AT AMPLEFORTH
VISIT OUR WEBSITE OR CONTACT OUR
PASTORAL TEAM ON 01439 766087

Extending our Welcome to all who visit

"All guests who present themselves are to be welcomed as Christ, for he himself will say: I was a stranger and you welcomed me." The Rule of St Benedict

We have always been fortunate to welcome many visitors to this valley, not just those who come on retreat or who have a relationship with the Monastic Community. The Abbey and our beautiful surroundings are an important heritage site within North Yorkshire and many people come here to visit, even if just stumbling across us on their way to Helmsley. For many years we have operated a Visitor Centre and Tea Room, to welcome those who come here for an occasional visit. This first encounter with Ampleforth Abbey is important and we want to show all guests a Benedictine welcome and hope that this could be the beginning of their relationship with us. So often this has been the case thanks in no small part to the fantastic volunteers who have welcomed so many visitors with enthusiasm.

Thanks to a generous donation for our Visitor Centre we are able to not only refurbish and expand the Centre, but now



move our Tea Room to be in the same location within Alban Roe House. We believe that this will create a much warmer welcome to those coming across us for the first time, offering a window into our heritage and a first glimpse of Benedictine life at Ampleforth.

Fr Hugh Lewis-Vivas will be taking on the role of Visitor Centre Warden when it reopens. With many years of experience as a Guestmaster behind him and a refurbished Visitor Centre, he and his team will ensure all those who come across us through this initial welcome will feel the warmth Ampleforth offers.

Pastoral Ministry to Ampleforth College

Our ministry to Ampleforth College is the fruit of our monastic life and prayer, where we can offer communal witness and invite the students to open themselves to experience a transforming encounter with Christ. There are currently nine members of the community who work at the College, primarily as House Chaplains, in partnership with a growing Lay Ministry. As chaplains in the College we find that wherever we can dispel indifference, young people start to search readily.

Our first call is to listen to the students, pointing to what matters. When we do this, it has an impact on the way people listen and act. Each Chaplain ensures their ministry to the Houses is gospel driven, focussed on accompaniment of the young people and staff within the school. When we get this right, the relationships we build through this ministry help us all to grow together in faith.

FR AMBROSE HENLEY OSB
DEAN OF AMPLEFORTH COLLEGE



Inspiring Young Disciples

“Come and See”. When there is enthusiasm and a genuine invitation, people will come.

It was with this approach that we set out 20 years ago to extend our educational work beyond this valley in North Yorkshire and begin a new ministry providing retreats to school groups from across the North of England. Over the last 20 years we have welcomed thousands of young people from Catholic Schools to come here and discover something of our life, hoping that we will sow the seeds of faith amongst the young people we encounter. In some years we have had up to 50 groups here with us in person, and despite the pause in activity during lockdown we have been able to begin welcoming groups here once again.

Little could we expect how much sharing our life with these school groups has enriched our own community. Our life is predominantly spent in prayer and not out in the world, an inverse correlation to that of a Parish Priest, however, this ministry brings the world to us. Long standing relationships have been established with schools from Bradford to North Shields, but no matter how many years we have been welcoming a school here, their young people never fail to surprise us.

A typical Year 9 residential experience, for boys and girls aged 13 and 14 and their teachers, will be based in Alban Roe House. Over the course of a few days, we share some of our life with these young people, introducing them to our life of prayer, answering their questions honestly and openly, inviting them to join us in the Choir for the Office, celebrating Mass and providing some of them with their first night away from home, or even their first glimpse of the countryside.



Thanks to a generous donation we are now able to upgrade the facilities available in Alban Roe House, whilst remaining true to what matters most to those who come here. Working with some of our regular schools they always tell us “Don’t get rid of the dormitories!”. There is something special about this experience of living in community that we can share, even in the simple way of providing accommodation where young people can strengthen their bonds through midnight feasts and whispers after ‘lights out’.

This ministry can be challenging, we don’t just welcome the best-behaved pupils from our partner schools, and as with any school the pupils can come with challenges that keep everyone on their toes. It is in these moments we pray that we can leave a positive mark, even in a small way, on these young disciples.

FR BEDE LEACH OSB

“The task of the House chaplain is a most rewarding ministry, helping the students to express their prayer-life, and being on hand to help with any emotional problems or wobbles. In St Dunstan’s and Oswald’s House we have morning prayer, led partly by the students, and in the evening a cycle of different prayers on each day of the week: Monday=Sung Compline, Tuesday=Story-Time (a bible story), Wednesday= lectio in year-groups, and so on. All these are mostly student-led, with reverence, devotion and enthusiasm. As chaplain I am also gardener, students enjoy helping with the garden, some regularly, some occasionally, and this too provides an opportunity to chat and benefit from one another’s company. It is a joy to stand beside these kids as they go through the difficult years of finding their independence and developing into thoughtful and responsible young men.”

FR HENRY WANSBROUGH OSB

“I arrived back from thirteen years in our Monastery in Zimbabwe just as Fr Francis Dobson was diagnosed with cancer and Abbot Cuthbert asked me to take over from Francis as Chaplain to St Cuthbert’s House. I asked Francis what I had to do and he told me that the most important thing was to be at House Prayers, morning and evening, not to take them but just to be there. So, I have tried to live up to this as well as celebrating Mass once or twice a week, including Zoom Masses during Lockdown and exposing the Blessed Sacrament for Adoration once a week (and if I am not there, one of the two Eucharistic Ministers in the top year will sometimes do that). So one gradually gets to know the students and they gradually get to know me. Sometimes, in the fortnightly Chaplaincy Hour I will show a film or some slides of the Stations of the Cross or the mysteries of the Rosary.”

FR RICHARD FFIELD OSB

A Marian Prayer Garden at Ampleforth



others in this way. Once complete, the Marian Garden will provide a tranquil space for reflection and contemplation. Situated below the Memorial Garden, a central path, lined by an avenue of cherry trees, will lead visitors through an informal garden towards statue of the Virgin Mary that will come in to view, located at the head of the garden. There will be a central courtyard, with seating, semi-enclosed for peace and privacy, orientated towards the statue of Our Lady.

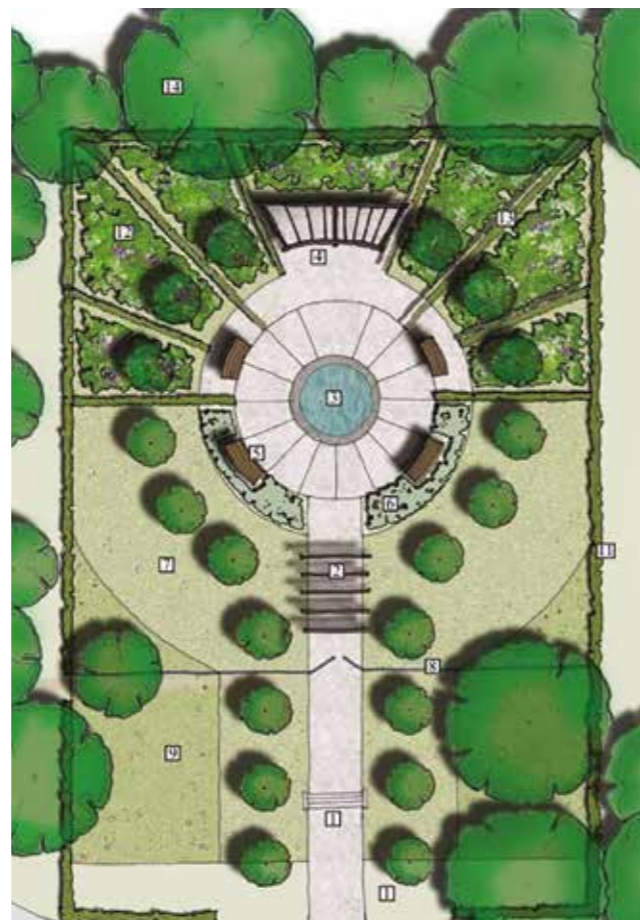
We know that this will become a place of prayer, peace, and contemplation, inspiring a deeper devotion to Our Lady, Mother of Hope, to whom the garden will be dedicated. We are extremely grateful for the support and vision of our benefactor in enabling this to be available to all who visit Ampleforth, and we look forward to welcoming you all here to enjoy and pray in this space once it is complete.

FR WULSTAN PETERBURS OSB
SUB-PRIOR & CELLERAR

About two years ago, a great friend of the monastic community said that she would like to make it possible for Ampleforth to have a Marian Prayer Garden within its grounds.

Inspired by a deep devotion to the Blessed Virgin Mary, which began whilst she was at school, this benefactor wanted to offer a place of prayer and devotion to Our Lady, accessible to all who come to Ampleforth – monks, visitors, retreat guests, and students at the neighbouring College. So began a period of design and discernment to bring this project to fruition.

It has been a delight to work in partnership to develop the ideas for this space, to see an idea discussed over lunch begin to turn into concrete plans and a final design. Our eyes have remained firmly fixed on Our Lady, never losing sight of how she leads us closer to her Son and how this garden can inspire



Restoring Monks Bridge

For anyone who has visited Ampleforth in recent decades, you won't have missed the unsightly welcome presented by the scaffolding and cones around the iconic structure of Monks Bridge on the road from Ampleforth to Oswaldkirk. For many this is the first, and maybe only, sight they have of Ampleforth when arriving here. Thanks to the generosity of an Old Amplefordian and supporter of the monastery we now have the funds to remove the netting and scaffolding and shore up the bridge.

Plans to restore the bridge have been met very positively by the planning authorities and structural surveys have been undertaken in preparation for works that are due to begin very soon. Monks Bridge is such a tangible piece of Ampleforth heritage and it has been long overdue this attention due to lack of funding available to undertake the work. We are very grateful that philanthropic support will change this.

The first impression you will now get of Ampleforth on arrival is not one of crumbling decline, but a welcoming and hospitable reminder that you are coming to a special place



with a rich history. We look forward to sharing pictures of the bridge when works are complete and sharing its story in the Visitor Centre when it reopens.

PAUL DAVIES
DIRECTOR OF FINANCE & ESTATES
AMPLEFORTH ABBEY TRUST



Bringing the spirit of Lourdes into our homes

Since the 1950s the monks of Ampleforth have led and accompanied a Pilgrimage to Lourdes every year, until now with the arrival of the pandemic. Over the course of 2020 and 2021 the Ampleforth Lourdes Hospitalité sought ways to bring together this Pilgrimage family of Monks, Old Amplefordians, Oblates, Assisted Pilgrims and friends of Ampleforth in new and digital ways. Whilst there has been great sadness because of not being in Lourdes together in 2020 & 2021 this community has grown stronger and more inclusive in reaching out to each other, culminating in two Virtual Pilgrimages over the last 18 months and a host of regular online activities for this community.

Every week up to 40 households have met on a Monday night via Zoom to pray the Rosary. There has been weekly Lectio Divina and very popular "Thirsty Thursday" online reunions, bringing together up to 90 people all around the globe for a short reflection from a Chaplain and plenty of time to catch up online.

Last year there was a special online Mass on the Feast of Our Lady of Lourdes, celebrated by Fr Edward, with 100 households tuning in. Fr Abbot celebrated Mass for the Pilgrimage in March, live from the Abbey Church, with 300 people viewing in addition to the normal virtual congregation.

In 2020 we ran a lockdown fundraiser "A Pilgrimage for Pilgrimage", where Ampleforth Hospitalité members collectively wheeled, walked, cycled, swam and ran the distance to Lourdes from their own homes. This raised over £15,000 for future Pilgrimages and enabled us to make donations to the Accueil Marie-St Frai in Lourdes, as well as to support the upgrade of live streaming equipment in the Abbey.

From 16th-23rd July 2021 the Pilgrimage ran online for the second time, with a wide range of activities bringing together over 250 individuals and families online for Mass, praying the Rosary, Lectio Divina, children's activities, talks and the ever-popular Ward Party and Café Society. The week opened with a beautiful Mass from the Abbey Church and a powerful



opening talk from Fr Abbot. Many members of the monastic community and other Pilgrimage Chaplains worked alongside Pilgrimage members to enable a virtual Torchlight Procession, daily Mass, Stations of the Cross, Exposition of the Blessed Sacrament and a whole host of activities.

We pray that our preparations enable us to be together in Lourdes once again this year and thank all those involved with the Abbey's Lourdes Pilgrimage for their dedication, on behalf of Ampleforth, to promote time, prayer, devotion and care of the sick in Lourdes.

FR AMBROSE HENLEY OSB
LOURDES PILGRIMAGE SPIRITUAL DIRECTOR (2018-2021)



TO LEARN MORE ABOUT OUR PILGRIMAGE VISIT
www.ampleforthlourdes.org.uk

Supporting the Parishes

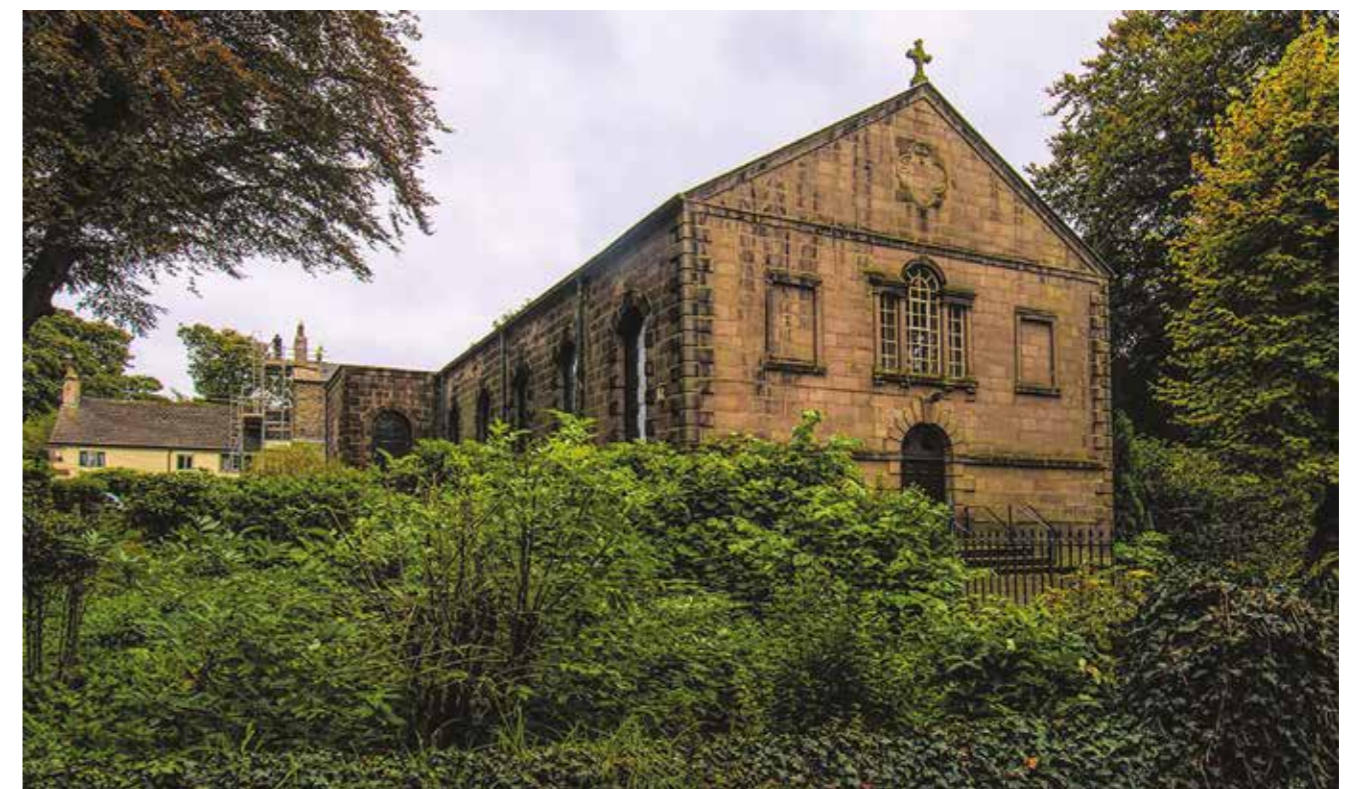
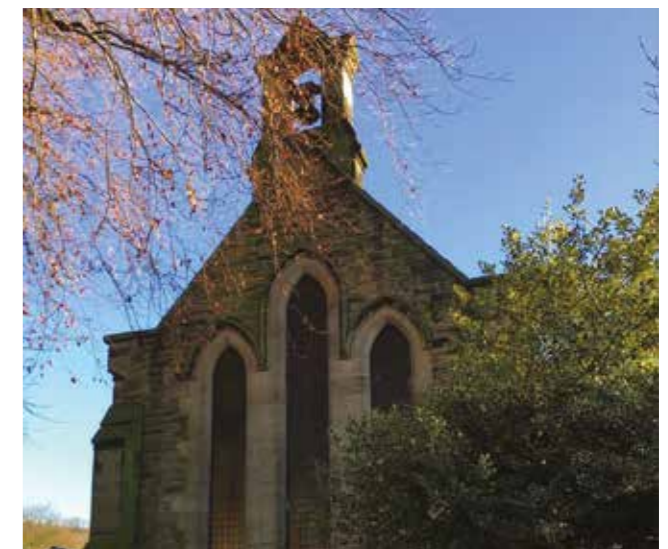
The Ampleforth Community has a long history of serving in Parishes and this continues with six monks of the Community serving five Ampleforth parishes and one Diocesan parish.

With over 840 regular Mass attendees in the parishes we are grateful for all the support we receive in parish life – be it in lay ministry, enabling parish communities to flourish or in financial support.

The parishes have been fortunate to benefit from legacies which have enabled the parishes to continue in their mission. On a practical front, legacies and financial support have enabled the completion of much needed work, the maintenance of parish buildings and thereby have provided the opportunity for parishioners to come together in parish churches in which they build worshipping communities.

As we move forward, we are looking to the future and what the Community can offer pastorally. Our sense of Mission has not diminished, even if the number of parishes we serve at a distance from the Abbey reduces, the way in which we execute pastoral ministry will change: our aim is for the Abbey to become a centre of pastoral outreach.

ABBOT ROBERT IGO OSB



25 Years in Zimbabwe

In 1992 a conference of Southern African Benedictines held at Chishawasha seminary outside Harare raised the possibility of having Benedictine monks in Zimbabwe. The Zimbabwean Bishops went on to invite the monastery of Ampleforth in the North of England to found a monastery in Zimbabwe.

The neighbouring Precious Blood sisters offered a building in their grounds at Monte Cassino mission near Macheke as an initial location and thus the Monastery of Christ the Word was founded in 1996 under the leadership of Fr Robert Igo became was the first Prior. In 2021 we celebrated 25 years since our foundation.

Prayer, Lectio Divina, manual work and attending to the needs of our guests fill our days. We also go out to lead retreats for diocesan clergy, religious communities and other groups. At the Monastery we grow a lot of our own food, fruit and vegetables as well as raising our own livestock. We have goats, sheep, rabbits, chickens, ducks, geese and turkeys. We also do our own cooking, cleaning, washing and general monastery maintenance. During the main meal of the day we listen quietly to a reading. In the spirit of Pope Francis' letter *Laudato Si'*, we have solar cells for electricity and solar geysers for hot water.

There are three monks in the Community at the moment: Father Barnabas Pham is the Prior, and the other monks are Father Terence and Brother Placid. We hope to welcome a



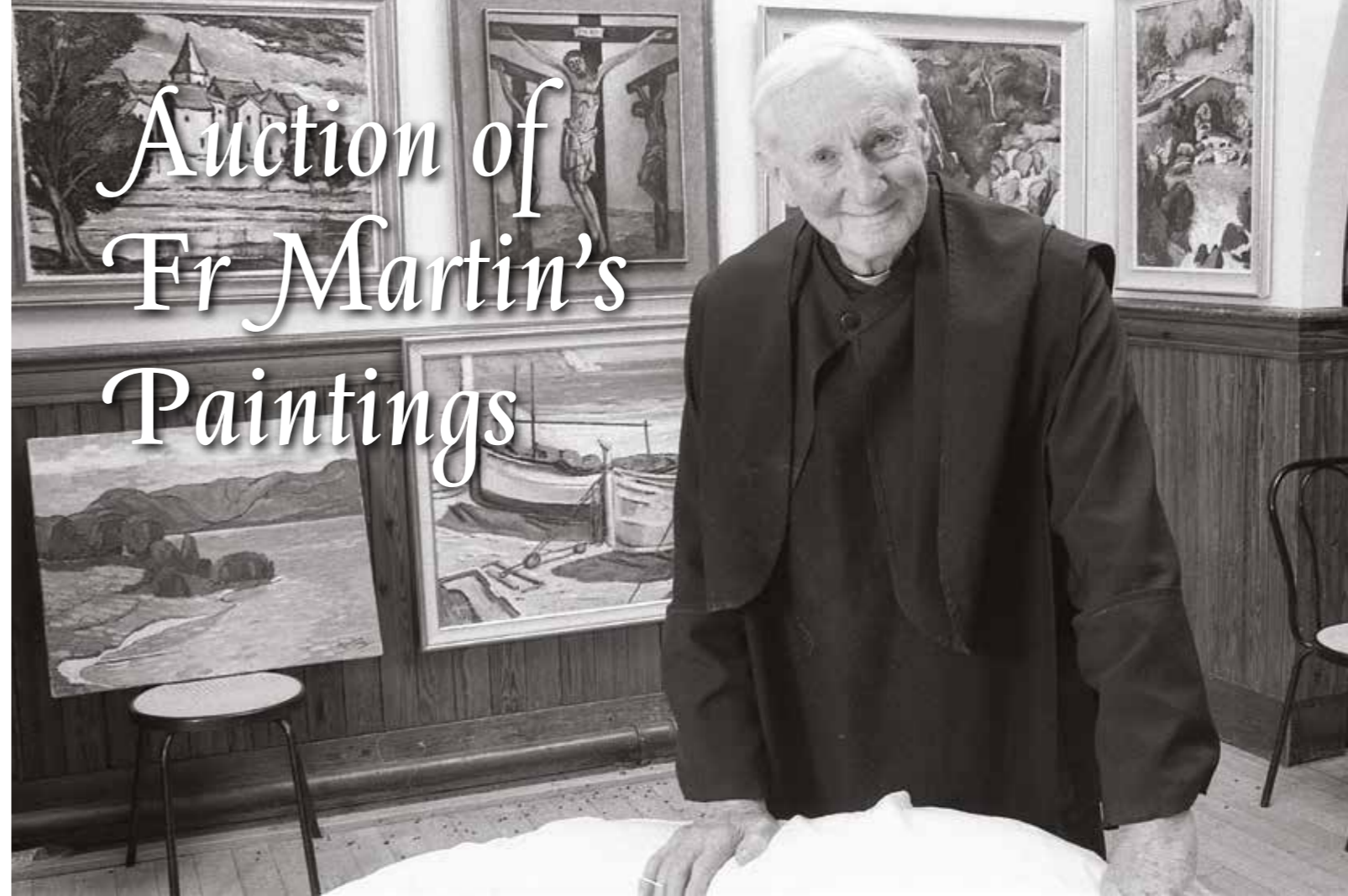
new aspirant to join us soon. Brother Placid Mavura, the first Zimbabwean to take his final vows, came to the monastery in January 2007 and made his solemn profession seven years later in 2014. We look forward to the time when, God willing, the Monastery of Christ the Word will be an entirely Zimbabwean community.

We aim for deeper understanding about the care of those in need in Zimbabwe, and to welcome people who would like to come for the day, or to stay for a retreat. This invitation is open to everyone, including priests, lay people, young and old. You can come for just a couple of days, or a week, or more.

We are very grateful for all the support we receive from the Friends of Christ the Word, particularly from the parishes served by Ampleforth, which have been long standing supporters of our life and work. Fr Abbot recently made a special appeal to parishioners in Ampleforth Village who responded extremely generously. Every donation has a huge impact on our work here, as a few pounds go a long way in Zimbabwe!

THIS ARTICLE HAS BEEN ADAPTED FROM AN INTERVIEW WITH FR BARNABAS PHAM, PRIOR OF THE MONASTERY OF CHRIST THE WORD IN ZIMBABWE. THE FULL ARTICLE BY BR ALPHONSUS KUGWA CAN BE FOUND IN THE CATHOLIC CHURCH NEWS, A PERIODICAL OF THE ZIMBABWE CATHOLIC BISHOPS CONFERENCE.

Auction of Fr Martin's Paintings



The 2020 auction of Fr Martin's paintings was not about parting with the wonderful products of his talent, but rather providing an opportunity to broaden the family, in other words for people to make one of Fr Martin's distinctive paintings their own, to share in the vocation of the artist. In a Letter to Artists in 1999, Saint Pope John Paul II wrote: "The artist has a special relationship to beauty. In a very true sense it can be said that beauty is the vocation bestowed on him by the Creator in the gift of 'artistic talent'. And, certainly, this too is a talent which ought to be made to bear fruit, in keeping with the sense of the Gospel parable of the talents".

We give thanks to God for the gifts he bestowed on Fr Martin, particularly in his talent as an artist, enabling him through his paintings to share with others the beauty of God's creation.

The 2020 auction ran online, for the first time, with many thanks to Bron Bury in the Development Office for making this happen. All the paintings in the auction found new homes, where they will be appreciated by many members of our wider Ampleforth family.

This sale raised over £33,000, support that was greatly appreciated at a time when our usual activities were limited. We are very grateful to all those who bid on the paintings and hope they find great joy in having a little piece of Ampleforth in their homes.



Lasting Legacies at Ampleforth Abbey

We have been very fortunate that people who feel their lives have been positively impacted by Ampleforth Abbey have chosen to leave bequests in their wills. Every legacy gift is something we treasure, and all the Abbey's benefactors are prayed for daily by the monastic community.

A gift in a will is a beautiful expression of the desire to see faith flourish here at Ampleforth, through the lives and prayer of the monks, their hospitality and our beautiful environment. Legacy gifts enable us to plan for the future, whether than be in a parish, supporting our Lourdes Pilgrimage, or here at the Abbey.

Recent bequests to the community at Ampleforth have had an immediate impact on life here. In the last year the legacy from one generous benefactor helped the monks buy a new second-hand car that is more suited to the needs of elderly or infirm brethren, for whom getting in and out of a car can be hard work. The benefits of a large boot have also been noticed as monks undertake manual labour around the Abbey's grounds! Other legacy gifts have been used to create a more comfortable environment for those who live and visit here, and some have been pledged to go into invested funds to support the monastery's future.



All legacy gifts are stewarded with the utmost care so they can collectively support the long term at Ampleforth. From the smallest to the largest bequest, every single one has a transformative impact on the life and works of the monastic community.

Thank you to all those who so generously pledge legacy gifts in your wills.

EMMA CRAIG
DEVELOPMENT OFFICE

IF YOU WOULD LIKE TO SPEAK TO SOMEONE ABOUT
MAKING A GIFT IN YOUR WILL, PLEASE GET IN TOUCH FOR
AN INFORMAL DISCUSSION – emma.craig@ampleforth.org.uk
OR 01439 741 112



The Ampleforth Abbey Trust aims to provide for a sustainable future for the Ampleforth Monastic Community, enabling the monks of Ampleforth to live a monastic life in accordance with the Rule of St Benedict and to be a genuine "school of the Lord's service" to which guests can be welcomed to share the search for God.

Ampleforth Abbey aims to be a place of genuine encounter. We seek to walk with people on a journey that enables them to find meaning and purpose. The community make significant contributions in education, pastoral ministry, and hospitality, centred on the community's daily life of prayer. We do this with the ambition of being a small self-sustaining charity that stewards our resources wisely and engages positively with our wider community.

As our identity is grounded in a monastic community, inspired and shaped by the Rule of St Benedict, we need to embrace and move forward in the vision of Hospitality. Guests must be welcomed with "all the courtesy of love" and with the greatest hospitality and humanity. As it has for centuries, the experience of our living, working and praying community can guide us into the future. Wherever one may find oneself in

life, Ampleforth is a place that extends an open invitation to discover a spiritual home, and to share in our life here.

Much of this is not possible without our wider community of friendship, prayer and support. For many years we have been fortunate to have benefited from the generosity of our extended community. It is essential that we continue to foster genuine relationships, a sense of belonging and mutual support with our friends and benefactors. We gratefully receive any offers of support which may enable us to live out our mission and reach out for others to join us in our search for God.



Contact Us

If you have any questions about supporting the Ampleforth Abbey Trust please contact:
The Development Office
Ampleforth Abbey, York YO62 4EN

Tel: +44 (0)1439 741 112

Email: emma.craig@ampleforth.org.uk

To donate in support of our work please visit:
www.ampleforth.org.uk/abbey/support-us



AMPLEFORTH
ABBAY

Ampleforth Abbey Trust, Registered Charity 1026493
Ampleforth Abbey, York, YO62 4ER
Ampleforth Abbey Trust is registered with the Fundraising Regulator.